

# TRI-GRIDS - Percentages

In each grid, 3 of the outside percentages add up to the central number. Circle the correct 3. You must circle 3 and only 3.

73	70	51
42	<b>100</b>	15
10	20	17

50	43	53
17	<b>100</b>	25
22	33	50

39	37	36
30	<b>100</b>	35
27	32	34



12	15	17
55	<b>100</b>	39
38	77	30

1	28	17
9	<b>100</b>	33
66	82	71

5	10	15
20	<b>100</b>	25
30	35	40

6	12	21
22	<b>100</b>	30
36	42	48

7	14	21
22	<b>100</b>	23
29	36	41



90	6	49
7	<b>100</b>	5
52	4	89

26	45	27
46	<b>100</b>	44
27	43	26

99	98	97
1	<b>100</b>	3
54	21	43

15	27	16
44	<b>100</b>	35
21	31	17

44	88	13
33	<b>100</b>	7
5	87	22

87	13	75
44	<b>100</b>	25
74	43	89

19	53	18
66	<b>100</b>	50
18	62	19

43	31	27
2	<b>100</b>	7
23	11	34



11	23	33
84	<b>100</b>	44
79	66	55

1	31	90
80	<b>100</b>	4
9	96	15

77	7	23
4	<b>100</b>	33
40	19	56

82	13	17
76	<b>100</b>	10
71	8	26

2	4	6
8	<b>100</b>	10
12	88	14

# TRI-GRIDS - Percentages

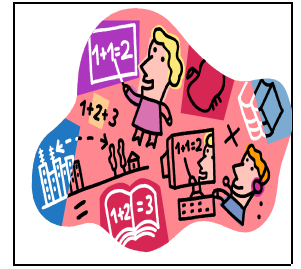
## ANSWERS

NOTE – there may be other combinations

	70	
	<b>100</b> <b>%</b>	
10	20	

50		
17	<b>100</b> <b>%</b>	
	33	

39		
	<b>100</b> <b>%</b>	
27		34



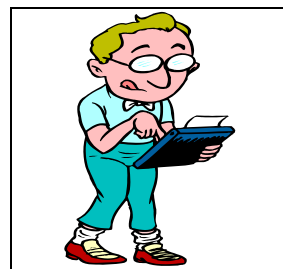
	15	
55	<b>100</b> <b>%</b>	
		30

1		
	<b>100</b> <b>%</b>	33
66		

	<b>100</b> <b>%</b>	25
	35	40

22	<b>100</b> <b>%</b>	30
		48

	<b>100</b> <b>%</b>	23
	36	41



90	6	
	<b>100</b> <b>%</b>	
	4	

		27
46	<b>100</b> <b>%</b>	
27		

	<b>100</b> <b>%</b>	3
54		43

44	<b>100</b> <b>%</b>	35
21		

	88	
	<b>100</b> <b>%</b>	7
5		

	13	
44	<b>100</b> <b>%</b>	
	43	

19		
	<b>100</b> <b>%</b>	
	62	19

43		
	<b>100</b> <b>%</b>	
23		34



11	23	
	<b>100</b> <b>%</b>	
	66	

1		90
	<b>100</b> <b>%</b>	
9		

77		
4	<b>100</b> <b>%</b>	
	19	

82		
	<b>100</b> <b>%</b>	10
	8	

2		
	<b>100</b> <b>%</b>	10
	88	